

**UBE2L3 Antibody (C-term)**  
**Affinity Purified Rabbit Polyclonal Antibody (Pab)**  
**Catalog # AP19885b**

**Specification**

---

**UBE2L3 Antibody (C-term) - Product Information**

Application	IHC-P, WB,E
Primary Accession	<a href="#">P68036</a>
Other Accession	<a href="#">P68037</a> , <a href="#">Q3MHP1</a> , <a href="#">NP_003338.1</a>
Reactivity	Human, Mouse, Rat
Predicted	Bovine
Host	Rabbit
Clonality	Polyclonal
Isotype	Rabbit IgG
Calculated MW	17862
Antigen Region	106-135

**UBE2L3 Antibody (C-term) - Additional Information**

**Gene ID** 7332

**Other Names**

Ubiquitin-conjugating enzyme E2 L3, L-UBC, Ubch7, Ubiquitin carrier protein L3,  
Ubiquitin-conjugating enzyme E2-F1, Ubiquitin-protein ligase L3, UBE2L3, UBCE7, UBCH7

**Target/Specificity**

This UBE2L3 antibody is generated from rabbits immunized with a KLH conjugated synthetic peptide between 106-135 amino acids from the C-terminal region of human UBE2L3.

**Dilution**

IHC-P~~1:25

WB~~1:1000

E~~Use at an assay dependent concentration.

**Format**

Purified polyclonal antibody supplied in PBS with 0.09% (W/V) sodium azide. This antibody is purified through a protein A column, followed by peptide affinity purification.

**Storage**

Maintain refrigerated at 2-8°C for up to 2 weeks. For long term storage store at -20°C in small aliquots to prevent freeze-thaw cycles.

**Precautions**

UBE2L3 Antibody (C-term) is for research use only and not for use in diagnostic or therapeutic procedures.

**UBE2L3 Antibody (C-term) - Protein Information**

**Name** UBE2L3

**Synonyms** UBCE7, UBCH7

**Function** Ubiquitin-conjugating enzyme E2 that specifically acts with HECT-type and RBR family E3 ubiquitin-protein ligases. Does not function with most RING-containing E3 ubiquitin-protein ligases because it lacks intrinsic E3-independent reactivity with lysine; in contrast, it has activity with the RBR family E3 enzymes, such as PRKN, RNF31 and ARIH1, that function like RING-HECT hybrids. Accepts ubiquitin from the E1 complex and catalyzes its covalent attachment to other proteins. Mediates ubiquitination by the CUL9-RBX1 complex (PubMed:[38605244](#)). In vitro catalyzes 'Lys-11'-linked polyubiquitination. Involved in the selective degradation of short-lived and abnormal proteins. Down-regulated during the S-phase it is involved in progression through the cell cycle. Regulates nuclear hormone receptors transcriptional activity. May play a role in myelopoiesis.

**Cellular Location**

Nucleus. Cytoplasm

**Tissue Location**

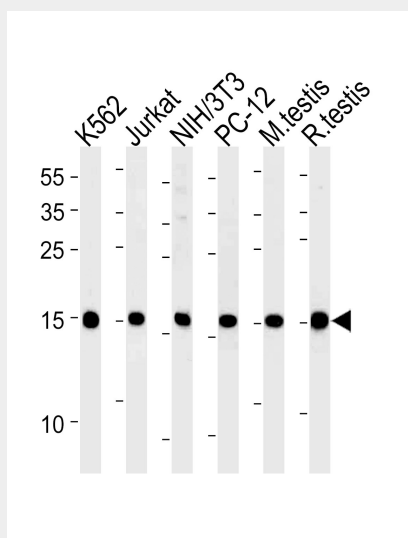
Ubiquitous, with highest expression in testis.

**UBE2L3 Antibody (C-term) - Protocols**

Provided below are standard protocols that you may find useful for product applications.

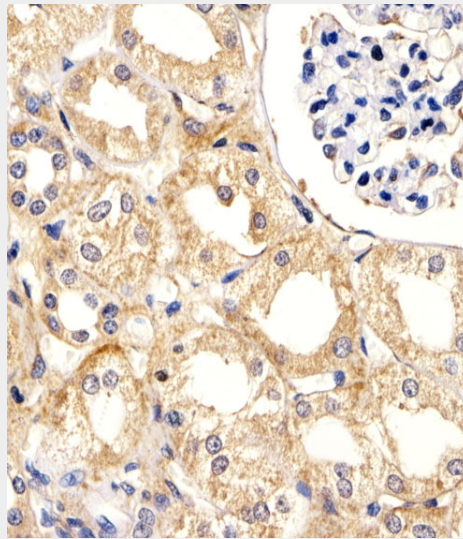
- [Western Blot](#)
- [Blocking Peptides](#)
- [Dot Blot](#)
- [Immunohistochemistry](#)
- [Immunofluorescence](#)
- [Immunoprecipitation](#)
- [Flow Cytometry](#)
- [Cell Culture](#)

**UBE2L3 Antibody (C-term) - Images**



UBE2L3 Antibody (C-term) (Cat. #AP19885b) western blot analysis in K562,U87-MG,mouse

NIH/3T3, rat PC-12 cell line and mouse testis, rat testis tissue lysates (35ug/lane). This demonstrates the UBE2L3 antibody detected the UBE2L3 protein (arrow).



Immunohistochemical analysis of paraffin-embedded H. kidney section using UBE2L3 Antibody (C-term) (Cat#AP19885b). AP19885b was diluted at 1:25 dilution. A peroxidase-conjugated goat anti-rabbit IgG at 1:400 dilution was used as the secondary antibody, followed by DAB staining.

#### **UBE2L3 Antibody (C-term) - Background**

The modification of proteins with ubiquitin is an important cellular mechanism for targeting abnormal or short-lived proteins for degradation. Ubiquitination involves at least three classes of enzymes: ubiquitin-activating enzymes (E1s), ubiquitin-conjugating enzymes (E2s) and ubiquitin-protein ligases (E3s). This gene encodes a member of the E2 ubiquitin-conjugating enzyme family. This enzyme is demonstrated to participate in the ubiquitination of p53, c-Fos, and the NF- $\kappa$ B precursor p105 in vitro. Several alternatively spliced transcript variants have been found for this gene.

#### **UBE2L3 Antibody (C-term) - References**

Fransen, K., et al. Hum. Mol. Genet. 19(17):3482-3488(2010)  
Dubois, P.C., et al. Nat. Genet. 42(4):295-302(2010)  
Kamatani, Y., et al. Nat. Genet. 42(3):210-215(2010)  
Purbeck, C., et al. Biochemistry 49(7):1361-1363(2010)  
Han, J.W., et al. Nat. Genet. 41(11):1234-1237(2009)